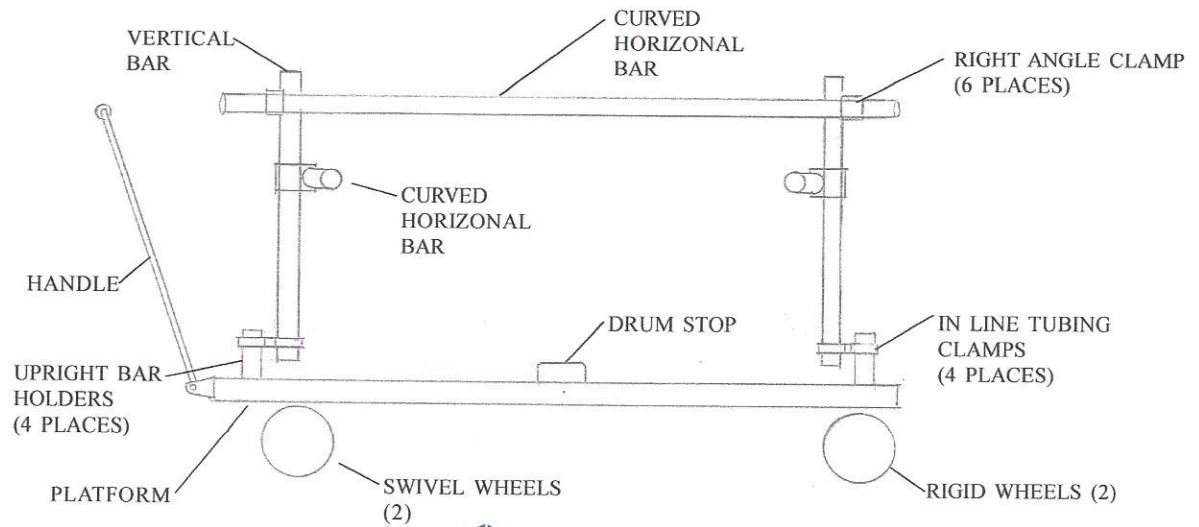
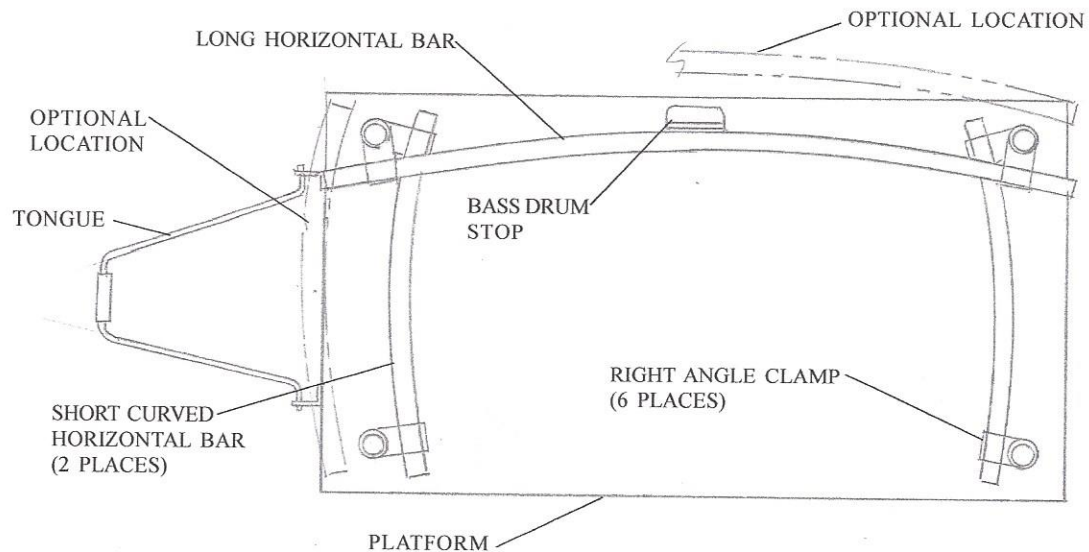


DRUMSET MOVER

ASSEMBLY INSTRUCTIONS



Ji JARVIS
Marching Band Products
 1-800-548-4239



NOTE : DO NOT RIDE ON PLATFORM WHILE IT IS IN MOTION.

1. INSTALL THE FOUR (4) CASTER WHEELS (SWIVEL CLOSEST TO TONGUE) USING THE 5/16" NUTS, 5/16" LOCK WASHERS AND 5/16" X 1" BOLTS.
2. INSTALL UPRIGHT BAR HOLDERS (4) WITH HARDWARE SUPPLIED.
3. INSTALL BASS DRUM STOP WITH HARDWARE SUPPLIED.
4. INSTALL THE FOUR (4) VERTICAL BARS (BLACK COLORED) ALONG SIDE THE HOLDERS USING THE FOUR (4) BLACK GIBRALTOR INLINE CLAMPS.
5. INSTALL THE LONG HORIZONTAL CROSS BAR USING TWO (2) OF THE SILVER GIBRALTOR RIGHT ANGLE CLAMPS.
6. INSTALL THE TWO (2) SHORT HORIZONTAL CROSS BARS USING THE REMAINING TWO SILVER GIBRALTOR CLAMP IN FRONT AND THE TWO (2) NO NAME BLACK RIGHT ANGLE CLAMPS IN THE BACK (OPPOSITE PLAYER'S SIDE.)
7. ADJUST HEIGHT AND LOCATION OF CROSS BARS AS REQUIRED.