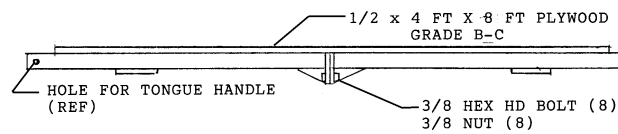
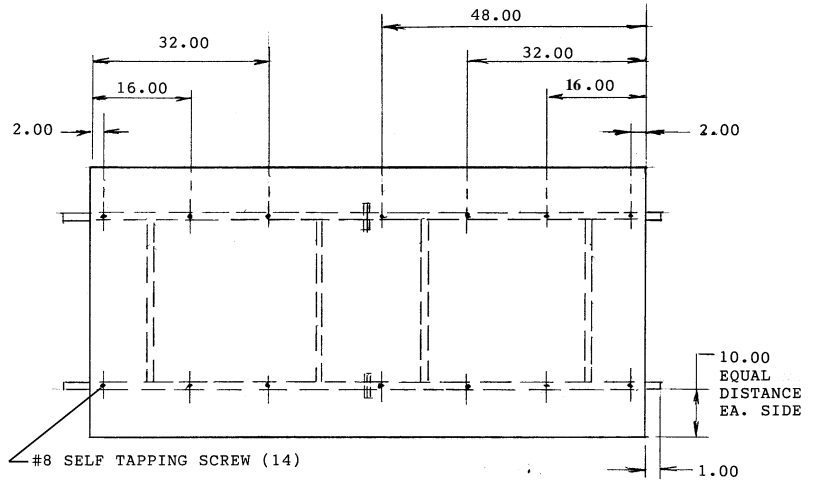


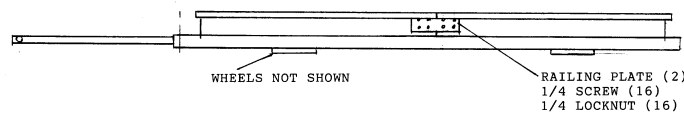
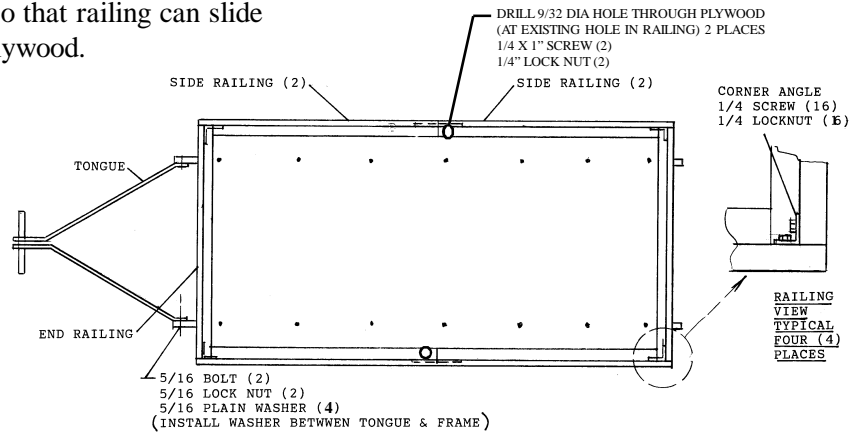
4 WHEEL WAGON KIT ASSEMBLY INSTRUCTIONS

TO INSTALL SELF-TAPPING SCREWS IT IS NECESSARY TO USE A VARIABLE SPEED DRILL MOTOR. SPIN THE SCREW AT MEDIUM SPEED SO IT WILL DRILL INTO METAL FRAME. (OPTIONAL-DRILL 3/32" DIA HOLE FOR SCREWS.)

1. For easier assembly – support frame at a working height.
2. Bolt wagon frames (2) together.
3. Bolt the 49-1/8" long railing sides together, using the plate supplied. (plate has 8 holes) See drawing for identification of railing.
4. Position plywood on frame according to drawing dimensions. **NOTE:** plywood is positioned 2 inches from end of frame with the tongue holes, 1 inch from opposite end. Install one screw in one corner of the plywood and another in the opposite corner. This will assure that the plywood is on square. Install all other screws. Loosen the four (4) corner screws so that railing can slide under plywood.



FRAME ASSEMBLY - 4 WHEEL WAGON



RAILING INSTALLATION- 4 WHEEL WAGON

JJ-JARVIS
Marching Band Products
1-800-548-4239

5. Install railing onto plywood using the four (4) corner angles.
6. Tighten the four (4) end self tapping screws and all other screws & nuts securely.
7. Turn the wagon over and install the wheels. **NOTE:** Wheels on end opposite of the tongue are non-swivel.
8. Turn the wagon right side up and install the tongue. **DO NOT** over tighten bolts. Tongue must pivot.
9. Assembly is complete.