

MALLET MOVER ADJUSTABLE WITHOUT A PERCUSSION RACK ASSEMBLY INSTRUCTIONS

1. CASTER ATTACHMENT

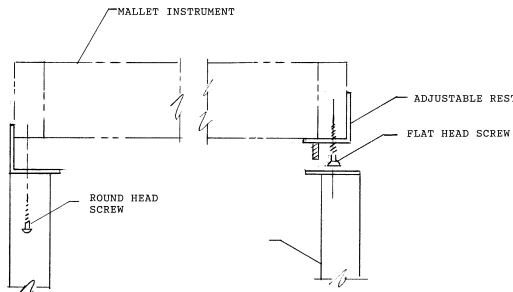
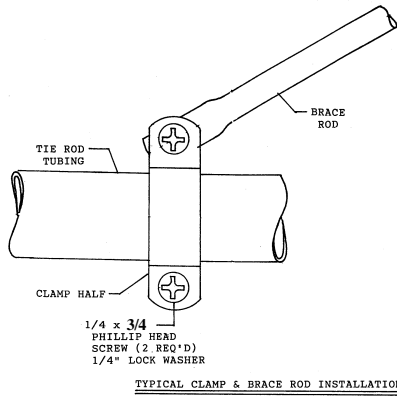
Install the four (4) casters, pneumatic or solid tire caster. Installation is the same. See drawing for rigid caster location. Install locking wheels on player side.

2. HEIGHT ADJUSTMENT

Adjust height of each frame to approximate height required for playing. Each end must be adjusted to the same height.

3. ROD INSTALLATION

Install the two tie rod in one fo the frames using the washers and plastic knobs supplied; do not tighten. Repeat for the other frame. The knobs are of the locking type. It will be necessary to hold the tie rods tightly while tightening the knobs



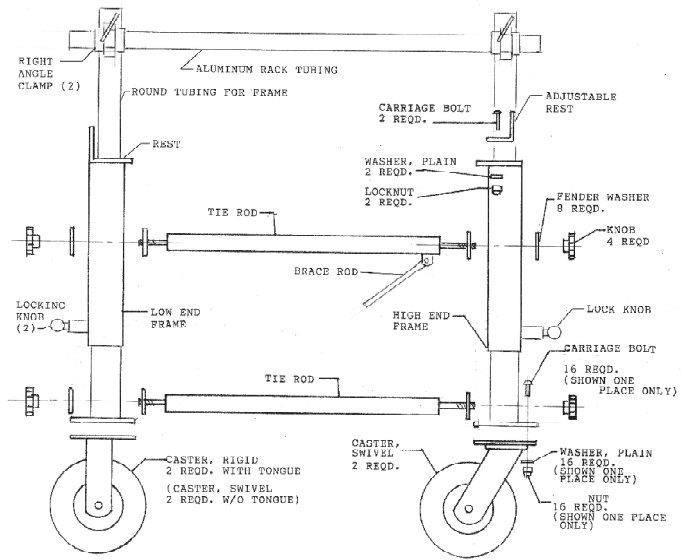
8. TONGUE

If you ordered your frame with the optional tongue, install the tongue using the two hitch pins.

9. VIBE PEDAL

If you ordered your frame for vibes, install the lower tie rod and vive pedal bracket. See View C-C.

Instructions continued on other side.



4. CLAMP & BRACE INSTALLATION

Install the brace by removing the clamp screws. Reinstall clamp screws. See drawing.

5. ADJUSTABLE REST ATTACHMENT

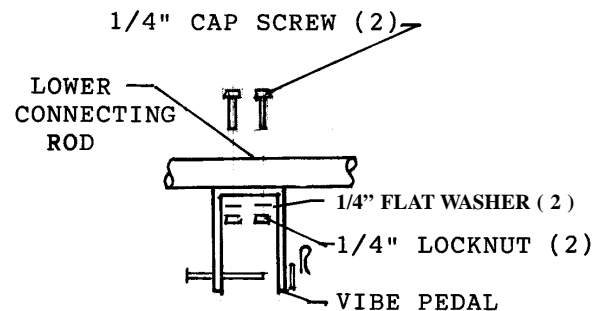
Install the adjustable rest on the high end of your instrument. Position the rest on the center (width) of your instrument and mark for drilling (on the bottom). Use the two flat head screws to attach the adjustable rest to your instrument.

6. INSTRUMENT INSTALLATION

Install the instrument to the frame. Install the two round head screws on the low end and the flat head screws on the high end. See drawing.

7. HEIGHT ADJUSTMENT

If your instrument needs to be higher or lower loosen brace rod clamp screw and the screw on opposite end of brace rod. Adjust up or down as needed. Slide clamp end of brace road as needed during adjustment. Both ends must be adjusted at the same time. Pull out locking knob to release frame. Assure that both locking knobs are fully in. Tighten brace road screws.



VIEW C-C

Instruction continued

NOTE : If you ordered your **Mallet Mover with Percussion Rack** proceed to step #10. Otherwise please skip to #11.

10. CLAMP & RACK TUBING INSTALLATION

Install the rack tubing support (right angle clamp) to one of the round frame tubing (SEE VIEW). Install the other right angle clamp on the opposite end. The clamps may be installed so that the rack tubing is held on either side but, both should be on the same side. Install the aluminum rack tubing. Both ends must be at the same height. Adjust height as needed. Install your instrument clamps where needed.

11. ASSEMBLY IS COMPLETE

Enjoy your new JARVIS Mallet Mover.

NOTE : FOR EXTRA SECURITY - Additional screws may be installed in the sides of the rests.

